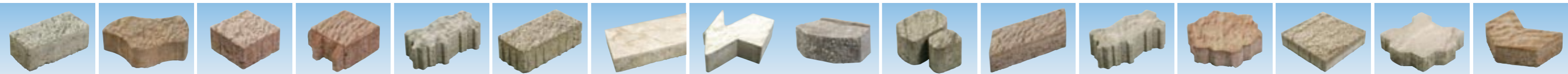
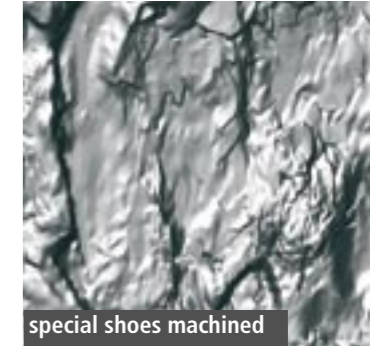
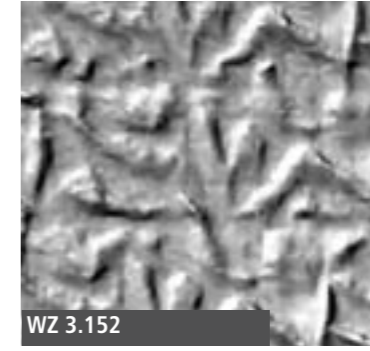
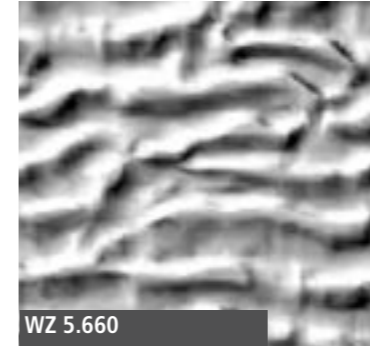
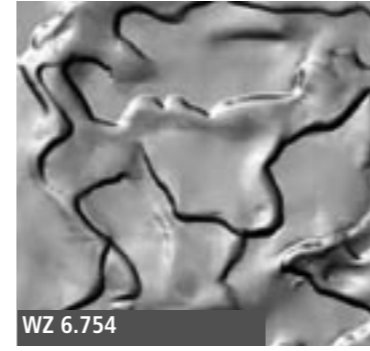
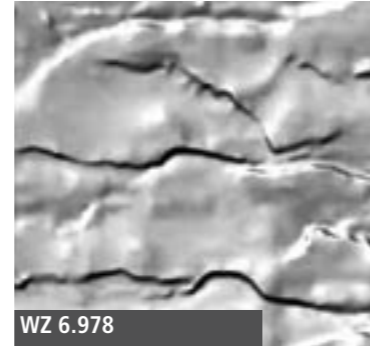
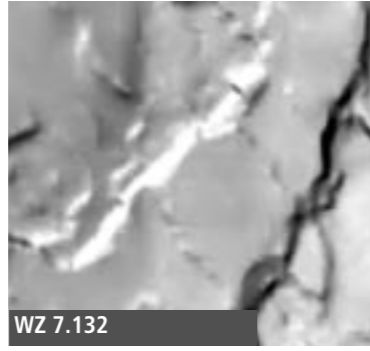
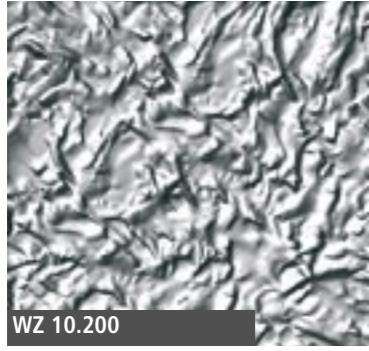
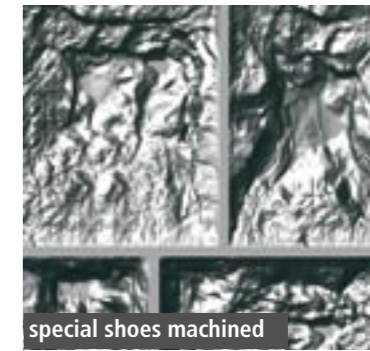
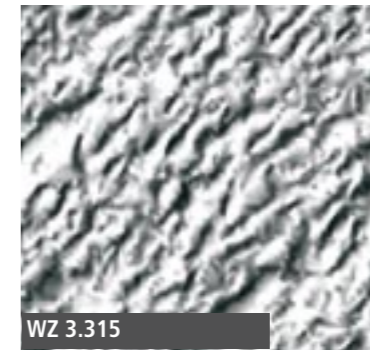
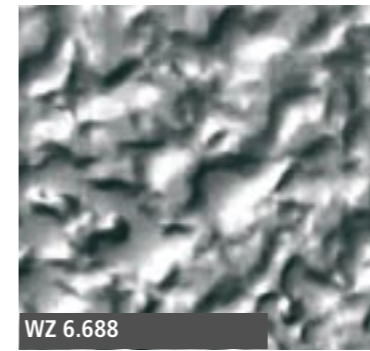
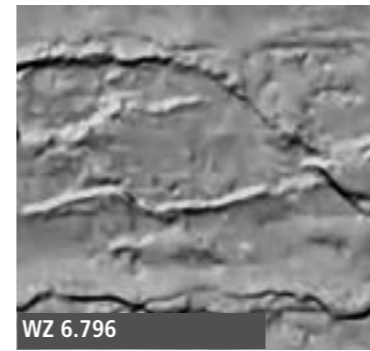
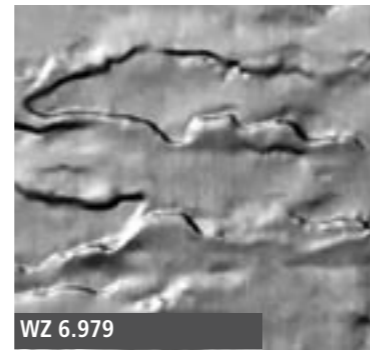
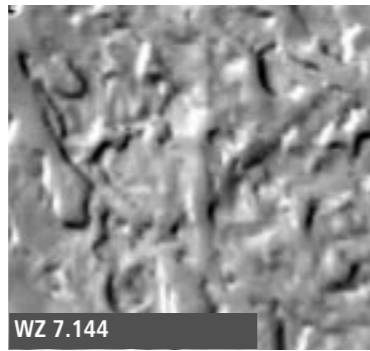
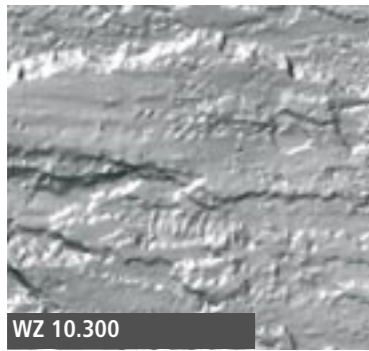
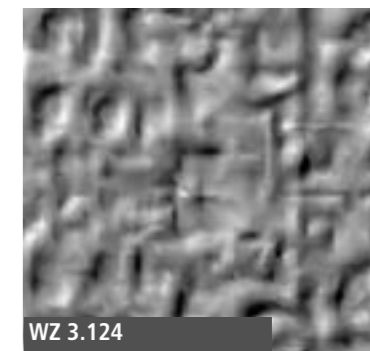
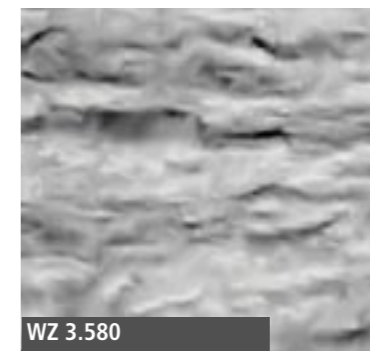
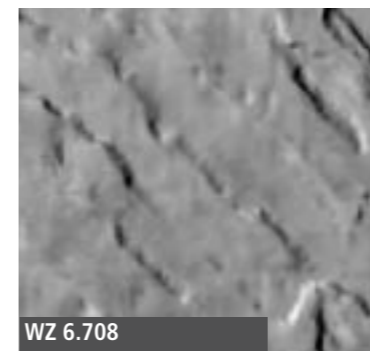
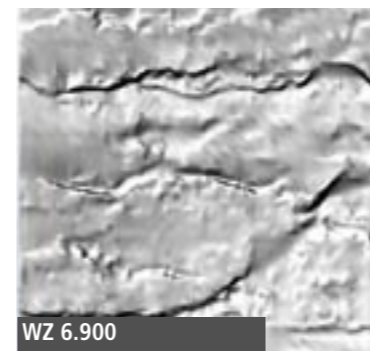
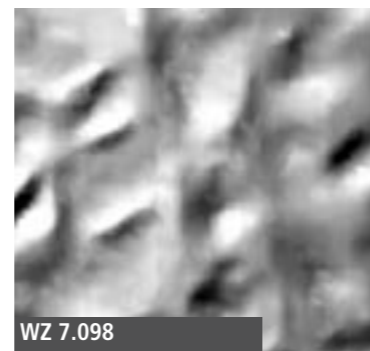




## PERFECT STONE SURFACES

→ **RAMPF** – ADDING DOLLARS AND SENSE TO YOUR BOTTOM LINE



Choosing the right tamper-shoe technology is crucial in applications where the surface quality is critical. Besides the proven standard tamper shoes, RAMPF has a whole range of new solutions for greater effectiveness. The new techniques available can lead to greater economic efficiency in production. With milled shoes, based on retro-engineering, stone surfaces can be manufactured which come incredibly close to the surface of stones that have been produced in costly and very time-consuming post processes. This allows the manufacturer to produce high density stones with surfaces ranging from the coarse, rustic type to the finest exquisitely structured face.



→ **RAMPF** – ADDING DOLLARS AND SENSE TO YOUR BOTTOM LINE

In our show hall in Germany we are exhibiting more than 200 different products, the cream of the crop of pavers, landscape products, retaining walls. All manufactured in a **RAMPF** mold by satisfied clients around the world.

We cordially invite you to walk around and be inspired by our exhibits.



RAMPF FORMEN GMBH · Altheimer Straße 1 · D-89604 Allmendingen  
Phone +49 7391 505-0 · Fax +49 7391 505-187 · info@rampf.de · www.rampf.com  
Germany · U.S.A. · Canada · Switzerland · Hungary · Poland · China · Singapore